

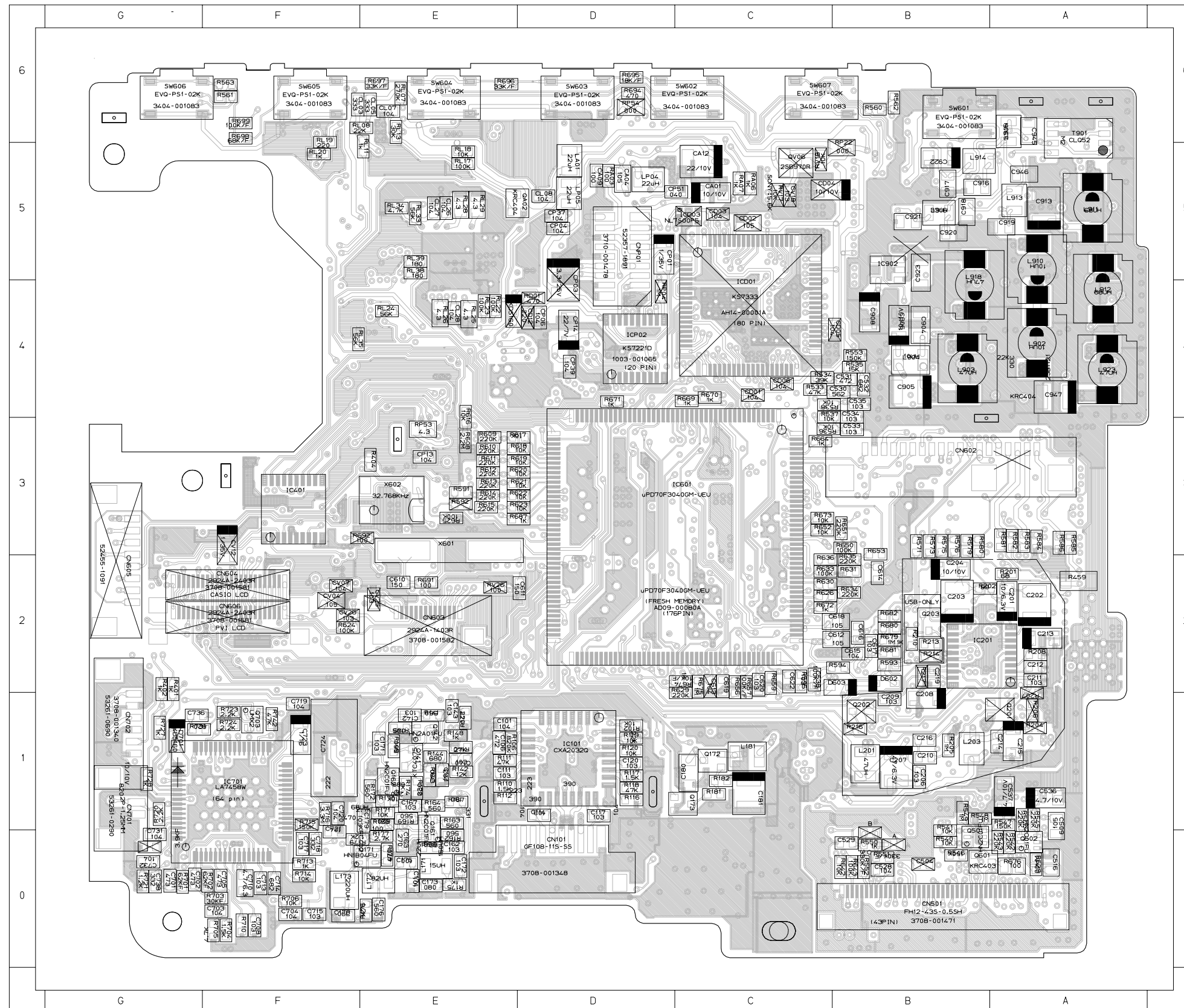
---

PCB Diagrams

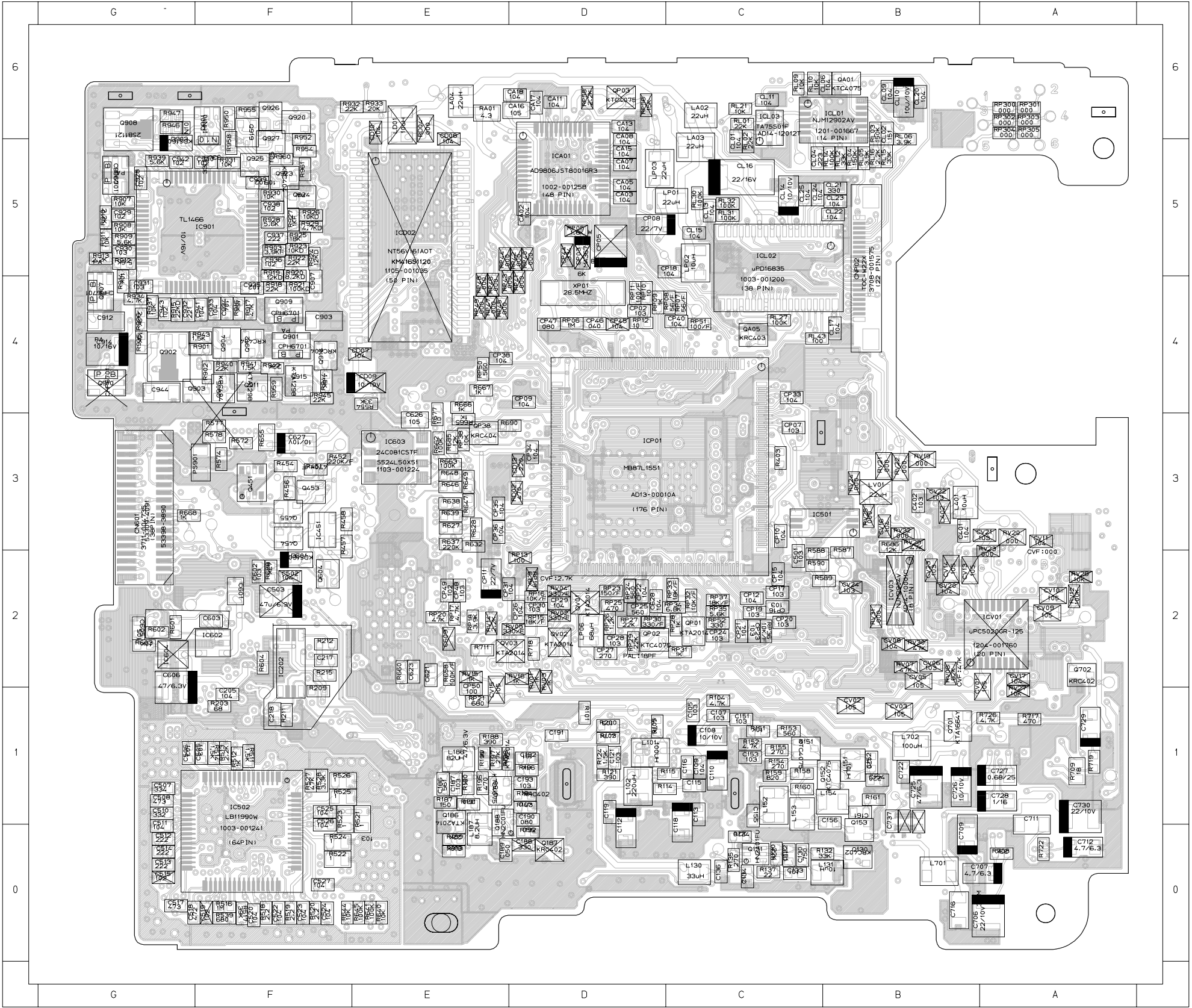
---

1 Main - - - - -	2
2 LCD - - - - -	4
3 Rear - - - - -	4
4 EVF - - - - -	5
5 CCD - - - - -	5
6 Function - - - - -	6

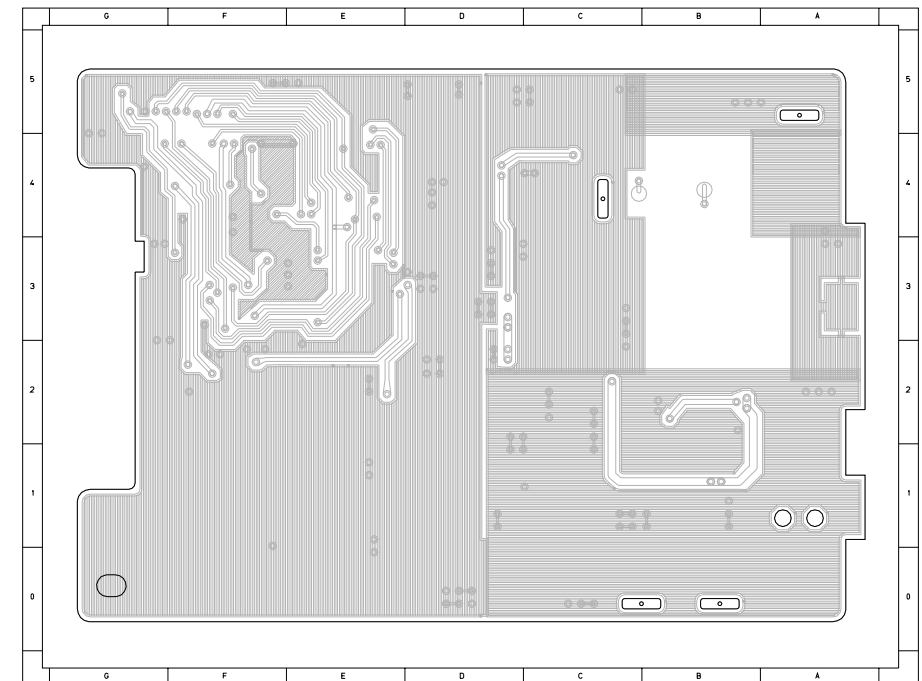
## 1 Main



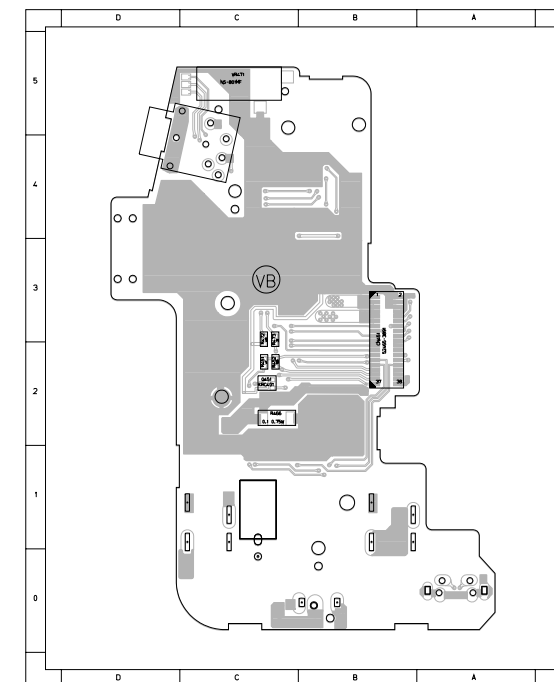
CONDUCTOR SIDE



## CONDUCTOR SIDE

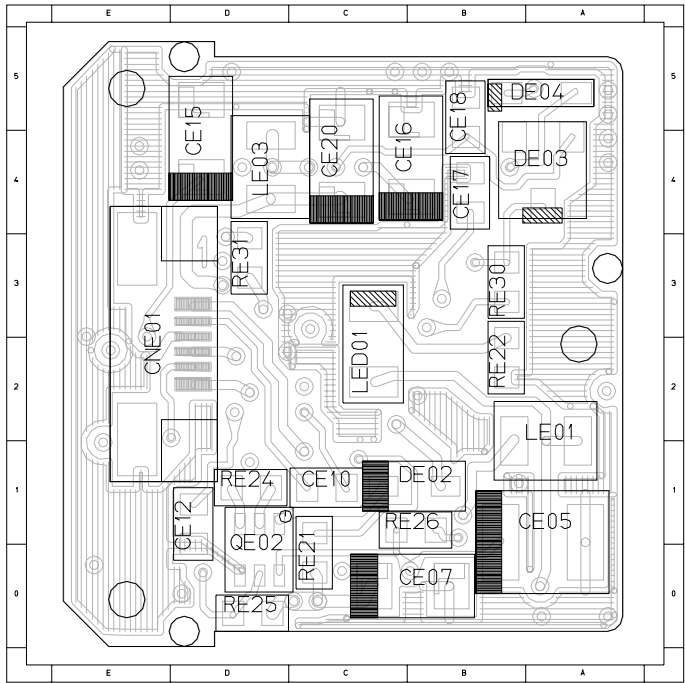


## COMPONENT SIDE

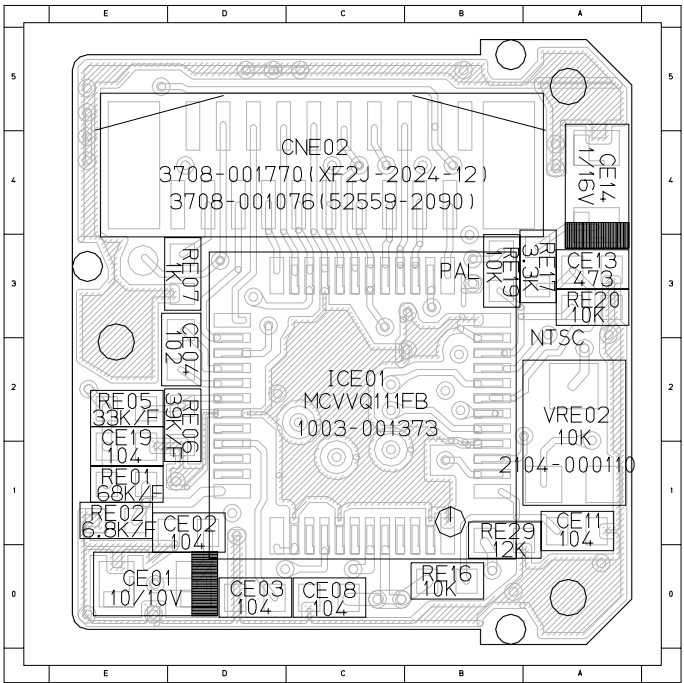


4 EVF

COMPONENT SIDE

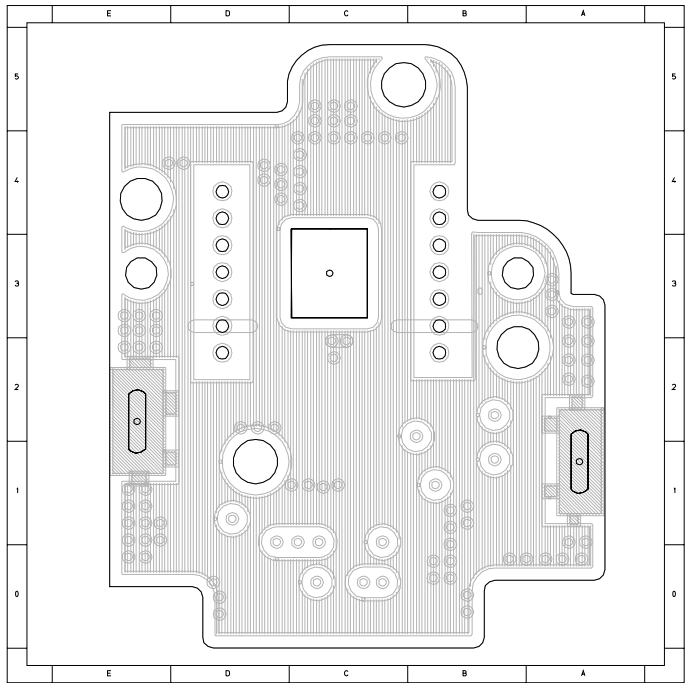


CONDUCTOR SIDE

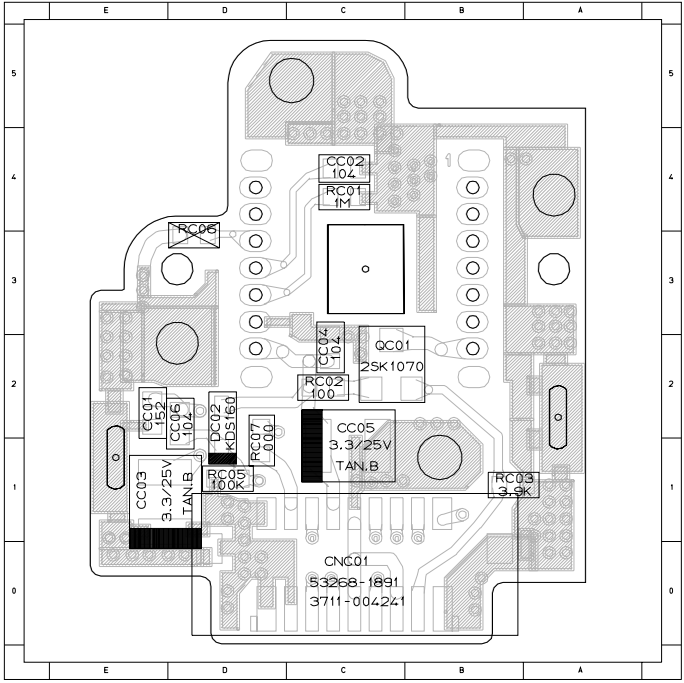


5 CCD

COMPONENT SIDE



CONDUCTOR SIDE



## 6 Function

